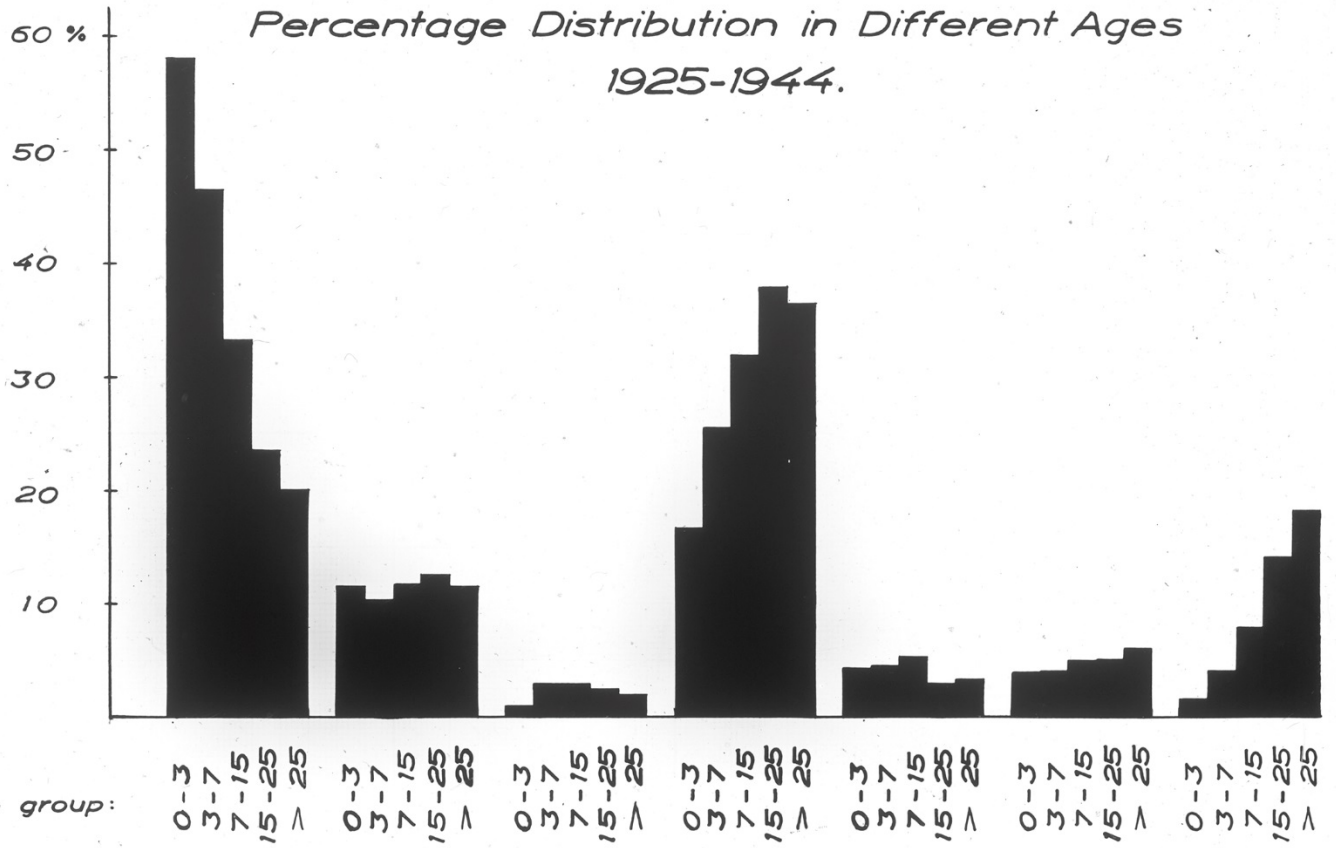


Site of Paralysis
Percentage Distribution in Different Ages
1925-1944.



<i>Age group:</i>	0-3 3-7 7-15 15-25 > 25	0-3 3-7 7-15 15-25 > 25	0-3 3-7 7-15 15-25 > 25	0-3 3-7 7-15 15-25 > 25	0-3 3-7 7-15 15-25 > 25	0-3 3-7 7-15 15-25 > 25	0-3 3-7 7-15 15-25 > 25
<i>Site of paralysis:</i>	Leg (s)	Arm (s)	Trunk	Arm (s) a. Leg (s) a./or Trunk	Cranial Nerves	Cranial Nerves a. Extremities a./or Trunk	Respiratory System
<i>Number of cases:</i>	4858	1824	377	5101	616	792	1735